



# NIPPON KAIJI KYOKAI

## *Certificate*

Certificate No.  
TA22469E(R)

*OF*

*APPROVAL*

Item	:	A-60 Class Deck
Product name	:	SeaRox SL 620 (40/25mm)
Specifications	:	See Annex.
Applicant	:	Rockwool International A/S Hovedgaden 584, DK-2640 Hedehusene, Denmark
Manufacturers	:	See Annex.
Testing standard	:	2010 FTP Code Annex 1 / Part 3
Test Report	:	See Annex.

THIS IS TO CERTIFY that the above type of products has been approved by Nippon Kaiji Kyokai with type approval No. 17FPA36DA, and that the products of the above type will be accepted for use onboard ships classed with the Society as complying with the relevant requirements of the Society's *Rules for the Survey and Construction of Steel Ships* and those of the *International Convention for the Safety of Life at Sea, 1974, as amended*, subject to conditional upon the manufacturers having a quality control system audited by a competent authority to ensure continuous compliance with the type approval conditions.

This certificate is valid from 28 June 2022 until 27 June 2027.

Issued at Tokyo on 14 July 2022.

NIPPON KAIJI KYOKAI



Y. Takao

General Manager

Material and Equipment Department

NOTE: The design, construction and way of installation are subject to the Annex(es). Any significant changes to the product without our approval will result in this certificate becoming null and void.



### 1. Manufacturers

Rockwool A/S  
Hovedgaden 501, DK-2640 Hedehusene, Denmark

Roxul Rockwool Insulation India Pvt. Ltd.  
Plot Z/4, Dahej SEZ, Dahej, District Bharuch 392 130, Gujarat, India

### 2. Test Report

Test laboratory : Danish Institute of Fire and Security Technology  
Jernholmen 12, DK-2650 Hvidovre, Denmark

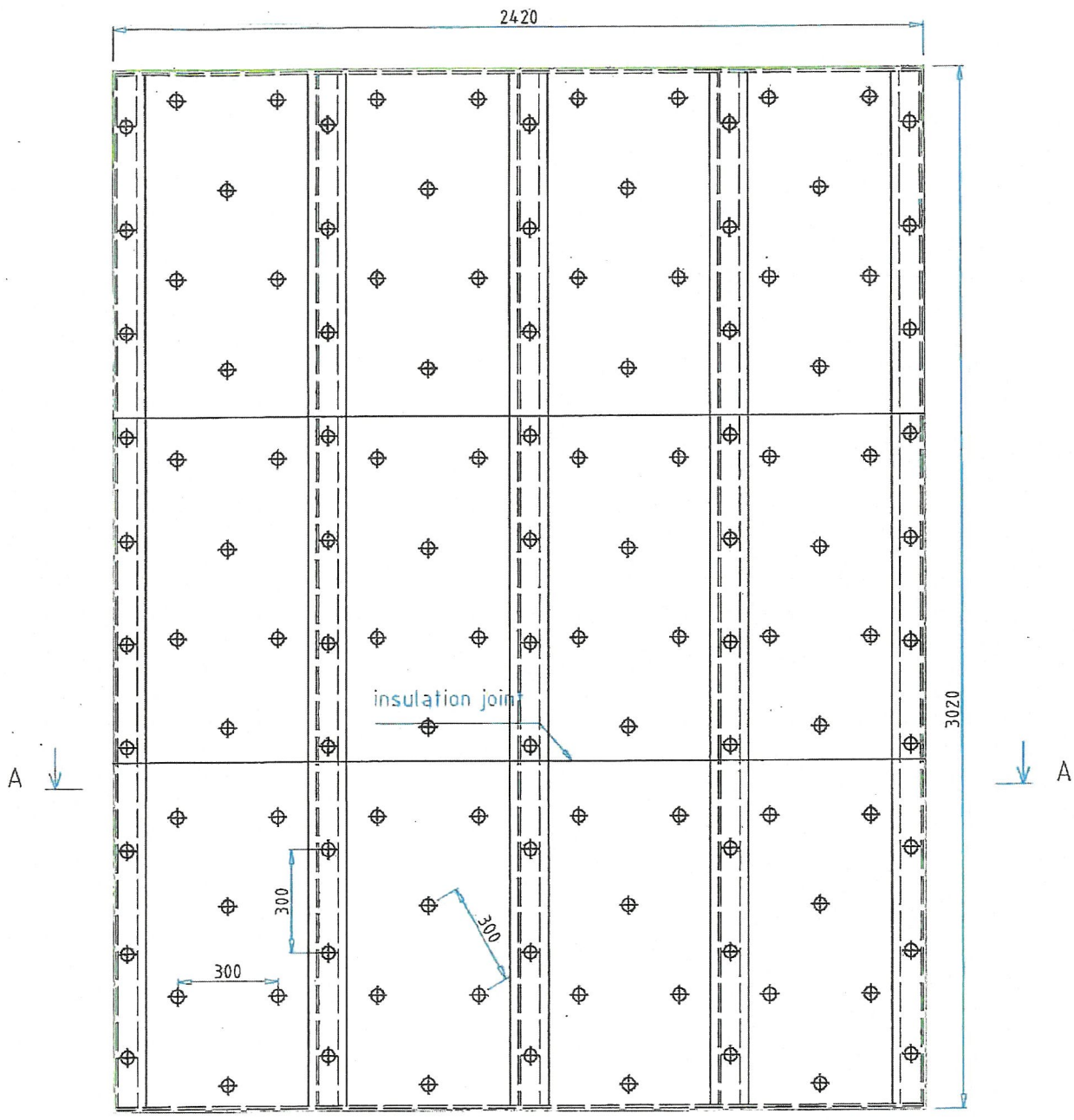
Report number : PGA10982A

Date of issue : 27 January 2017

### 3. Specifications

#### Product description

The specified thickness of SeaRox SL620 on the level is minimum 40 mm; density range 100-130 kg/m<sup>3</sup> and the specified thickness of SeaRox SL620 on the stiffeners is minimum 25 mm; density range 100-130 kg/m<sup>3</sup>



40mm SeaRox SL620 between stiffeners and 25mm SeaRox SIR20 over the stiffeners

3mm steel pin with 30mm washer

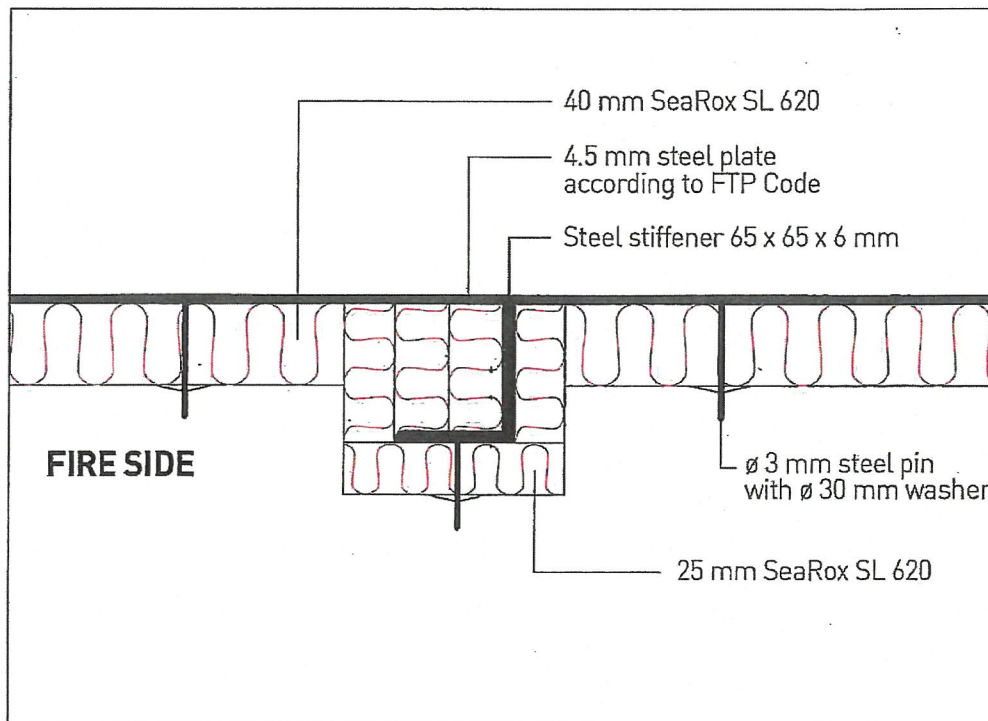
subject: A60 Deck SeaRox SL 620 25/40mm

**ROCKWOOL®**

dwg no.: 2017003

date: 2017.01.09

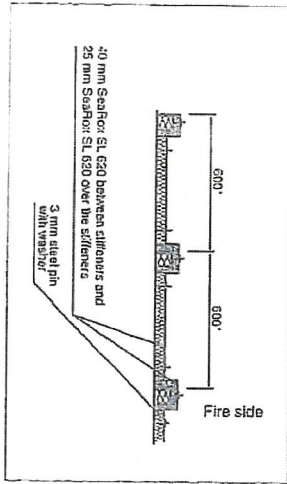
designer: DG **TECHNICAL INSULATION**



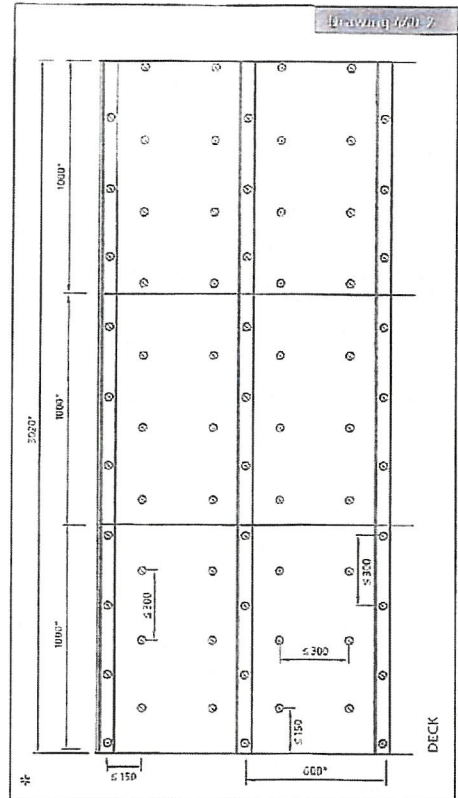
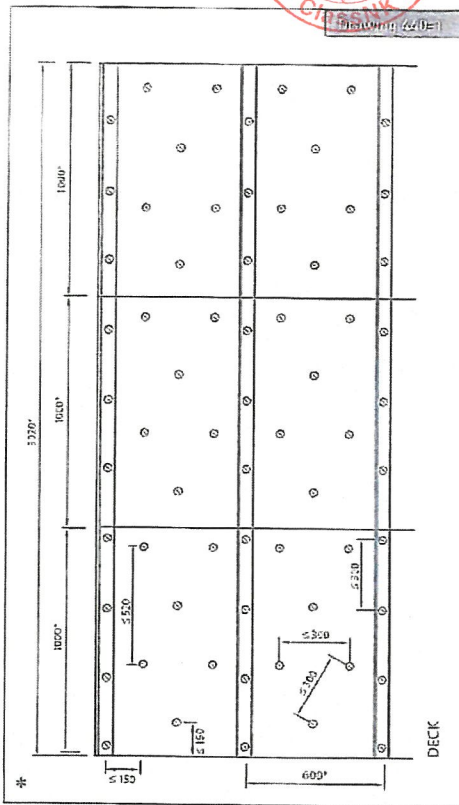
Date: 2017/09/05

Subject: A-60, SeaRox SL 620/ SeaRox SL 620

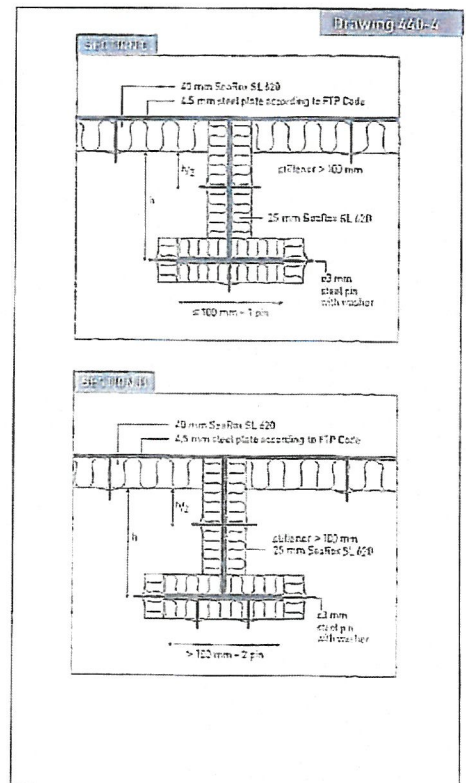
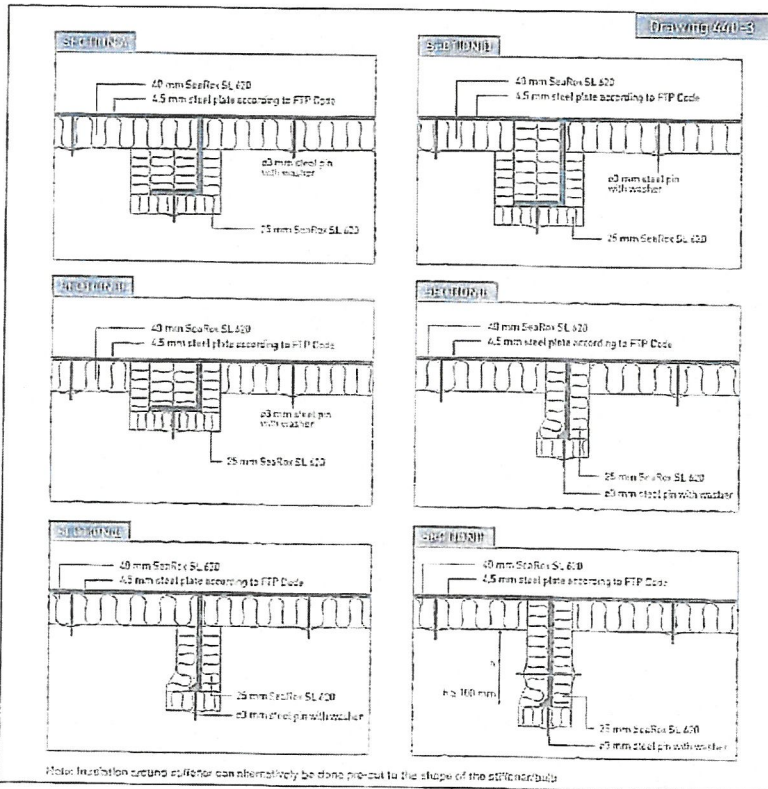
**ROCKWOOL®**  
TECHNICAL INSULATION



Danish Institute of Fire and Security Technology  
file no. PHA10908B



\* Dimensions may vary depending on structural design and size of insulation slab.



Date: 2017/02/09

All measurements in mm

Subject: A-60 Deck SeaRox SL 620/ SeaRox SL 620

**ROCKWOOL®**

Assessment Report Nos.:

INTERNATIONAL CERTIFICATION